

moki b

SS24





MKP4-38-01 Gonna nodo cashmere



MKP4-34-08 Camicia viscosa
MKP4-40-05 Cappello







MKP4-39-01 Giacca lino
MKP4-37-05 Pantalone lino





MKP4-38-04 Gonna a portafoglio tinta unita
MKP4-40-03 Borsa frange



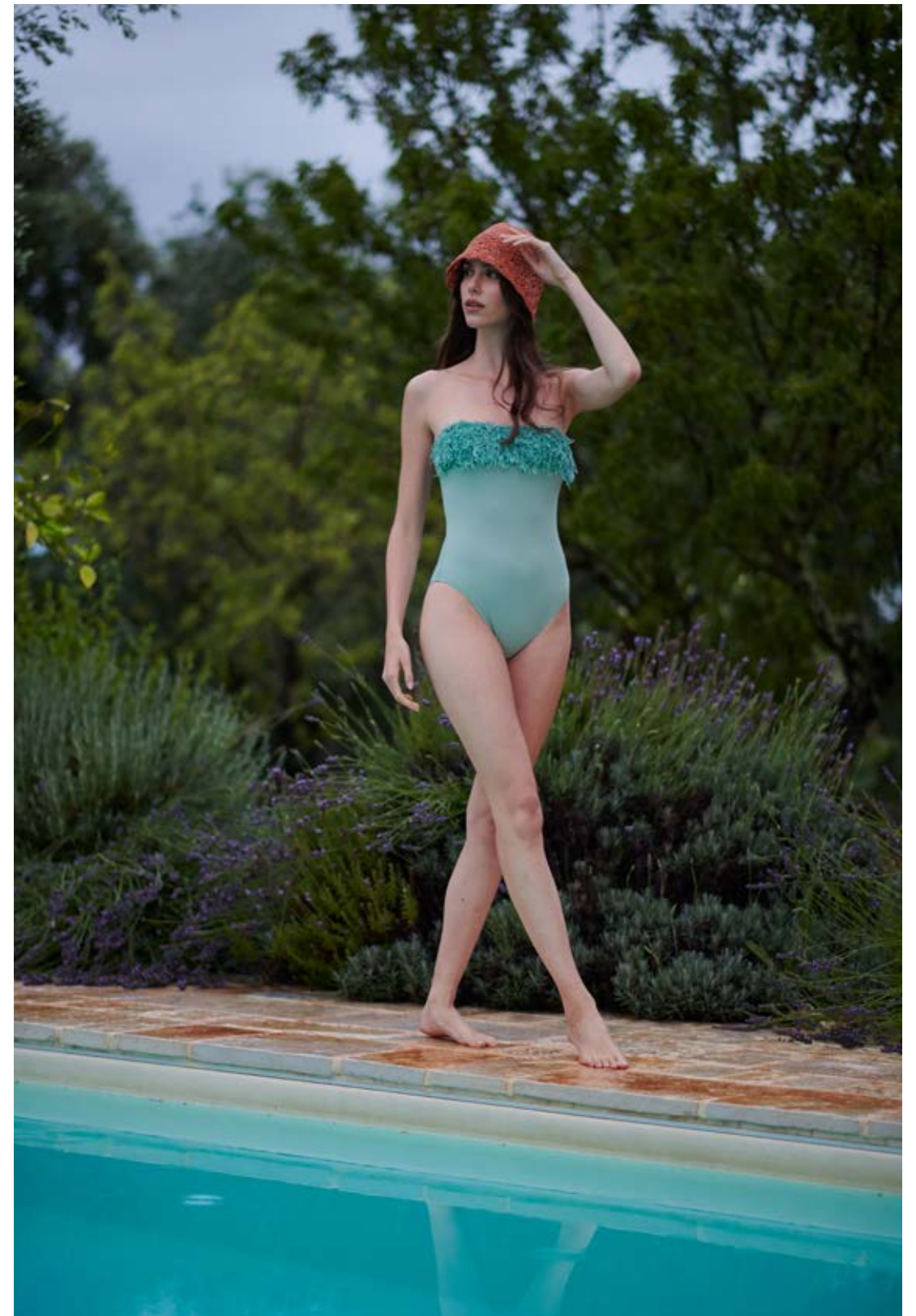
MKP4-34-03 Camicia lino



MKP4-35-03 Smanicata jeans
MKP4-37-09 Bermuda jeans



MKP4-34-04 Kimono arabo
MKP4-37-02 Pantalone arabo



MKD4-42-103 Intero plumes
MKP4-40-05 Cappello



MKP4-39-02 Cabane jeans
MKD4-41-359 Fascia jeans
MKP4-37-08 Pantalone palazzo jeans



MKD4-41-321 Triangolo jeans
MKD4-41-CZ Slip lacci jeans



MKP4-36-24 Abito lungo geisha



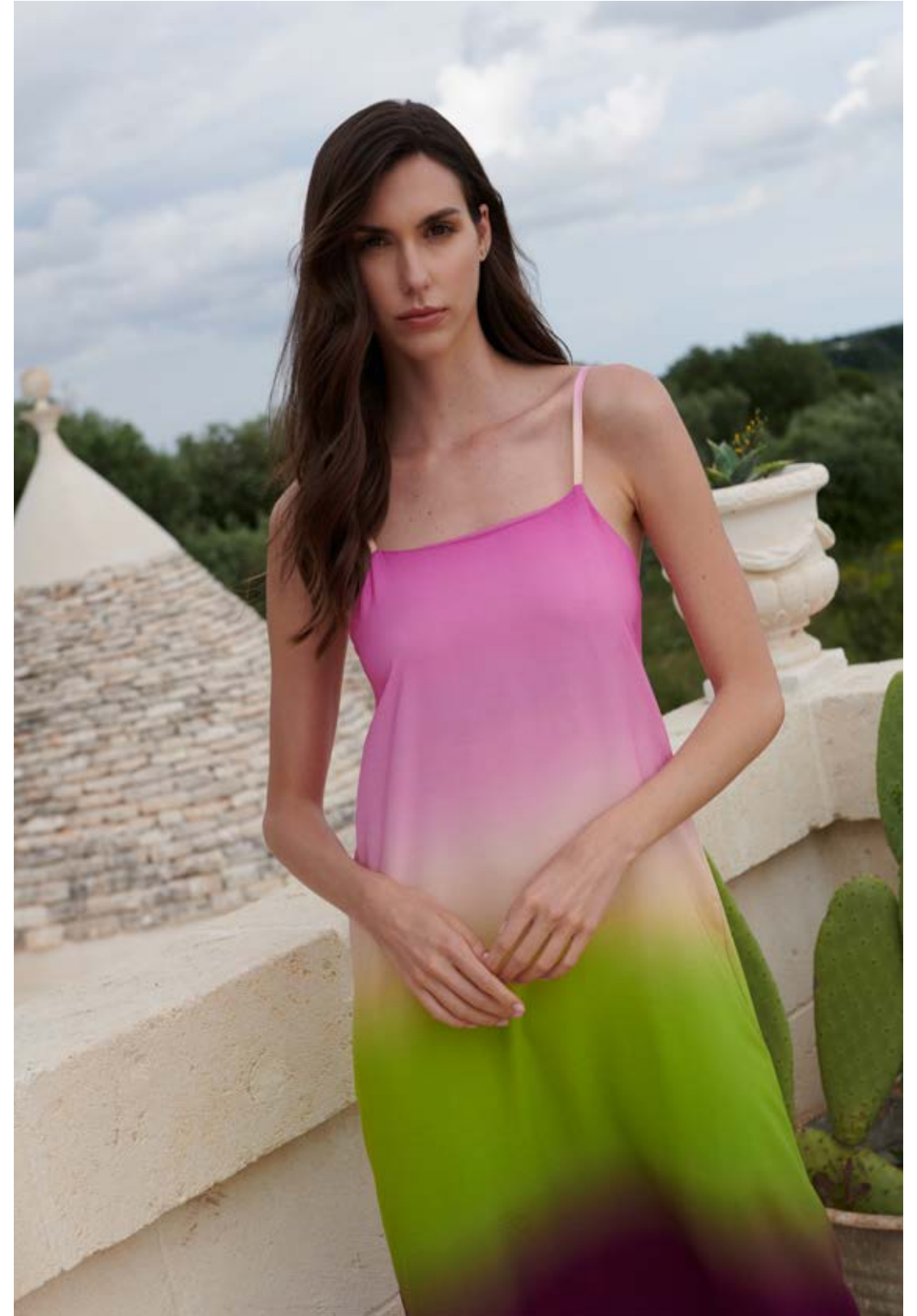
MKP4-34-02 Kimono damasco
MKP4-37-01 Pantalone damasco



MKP4-36-01 Chemisier lungo damasco



MKP4-36-15 Abito midi tye-dye



MKP4-36-16 Abito lungo spalline tye-dye



MKP4-36-13 Abito lungo balze rovi



MKP4-36-12 Abito lungo monospalla rovi



MKP4-36-11 Abito smanicato lungo rovi
MKP4-40-07 Fuscaccia bassa pelle



MKP4-34-05 Kimono chevron
MKP4-37-03 Pantalone chevron



MKP4-35-04 Gilet tinta unita
MKP4-37-10 Pantalone pince tinta unita



MKP4-36-22 Abito midi monospalla jersey

A woman with long brown hair is leaning against a blue wooden ladder against a light-colored stone wall. She is wearing a long-sleeved, button-down dress with a blue and white intricate paisley pattern. The ladder is made of thick, weathered blue-painted wooden poles. The background is a textured, light-colored stone wall.

SUNGAL SRL
Via Cesare Battisti, 1
26013 - Crema (CR) - ITALY
Tel. +39 0373 259472
info@mokib.it

www.brand-italy.it